

At Generation we're proud to be growing our work and impact in Greater Manchester

The opportunity is clear with well documented skills gaps across the tech, health and green sectors and a need to provide pathways for people in the Greater Manchester region facing significant, multiple and diverse barriers to employment.

Since launch in **Greater Manchester** in 2019, we've delivered impact across our programme portfolio that is...

BROAD

Supporting a rapidly growing number of beneficiaries



512 Learners enrolled
- 98 in 2024



225 Hiring employers
- 35 new in 2024

DEEP

facing barriers to employment, for whom we achieve life-changing employment outcomes



277 job placements*
- 45 in 2024



£23.1k average starting salary - 26.4 in 2024

DURABLE

with ongoing benefits to their wellbeing and economic mobility



c.80% retention at one year



£20k increased income over 5 years

*for those that have completed bootcamps

We've worked across Greater Manchester including supporting learners from across all 10 of its local authorities



We look forward to expanding our work in **Greater Manchester** in 2025.

This impact has been achieved through a model rated **'Outstanding' in all areas** by Ofsted, delivering the highest uplift in employment outcomes of any provision analysed to date by the **DWP Employment Data Lab team**.



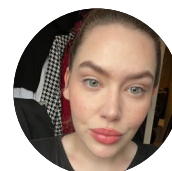
THIS HAS BEEN MADE POSSIBLE BY OUR VALUED PARTNERS

Key community organisations referring learners to course - including jobcentres across the region **including specifically in Rochdale and Oldham, and Trafford and Tameside Metropolitan borough councils**.

Important regional employers - including **Axa, First Contact and AccessPay**.

Local government - including **the Greater Manchester Combined Authority** for whom we've run both locally and nationally procured bootcamps.

Beyond the stats our impact in **Greater Manchester** is brought to life by **Codie's story** which you can read more about [here](#).



"Every day is different. I love the variety, and my colleagues have been so welcoming. My trainer explains things in a way that makes sense to me. It feels like I've found my place.

It feels amazing to make a difference in people's daily lives."

Codie, Sustainability Project Officer